

Screen Walls

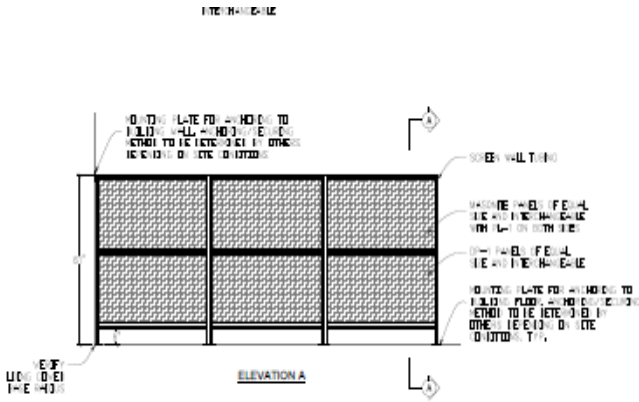
Item #: _____ Quantity: _____

Project: _____



Screen Walls

Decorative, Functional Design for Form & Function
Defines Space, Portable Wall Partitions



Optional Base Plate Models available*
 (Please note: not available on walls taller than 61")

Models

- MSW-34**
- MSW-61**
- MSW-88**

Details & Options "Customizable"

Screen Wall Material

- 1" x 2" 16-gauge stainless steel tubing (standard)
- Brushed Finish
- Black Powder Coat, optional

Screen Wall Insert Panel options

- Laminate panels (standard)
specify mfg./color
- Aluminum laser cut inserts with watercut pattern or custom shapes
- 3 Form available
- Custom decorative laminate
(contact factory)

Screen Wall Heights

- 34" high x 48" long (standard) not including feet
- 61" high x 48" long (standard) not including feet
- 88" high x 48" long (standard) not including feet
- Additional lengths available between _____?
Specify length required _____

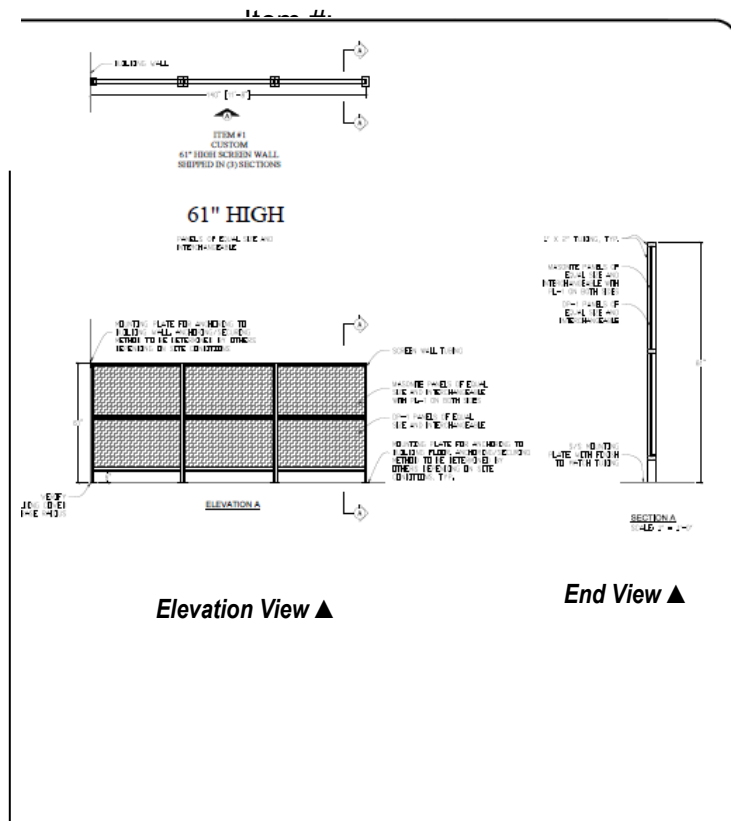
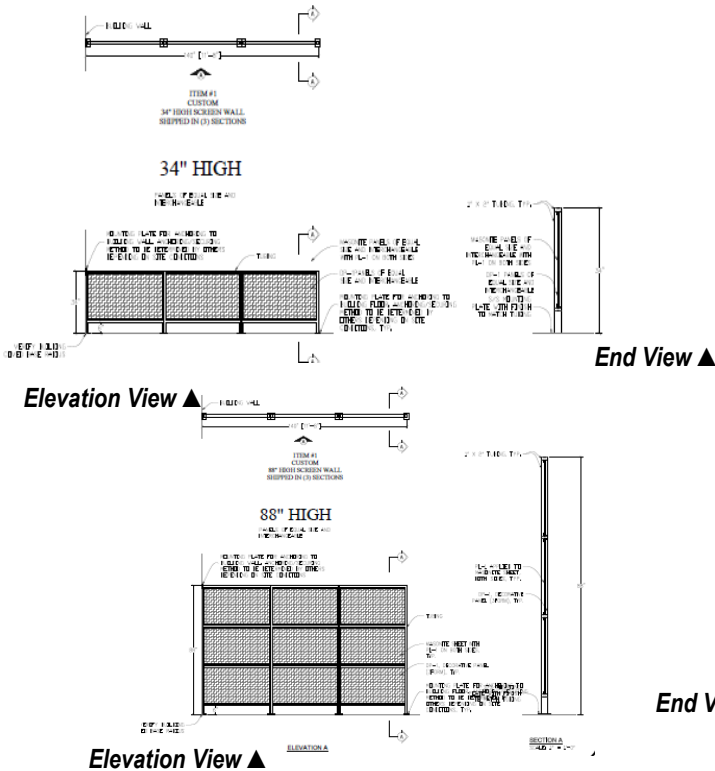
Mounting Options

- Portable designed with mountable 8" long x 12" wide base plates
(Please note: base plates not available on walls taller than 34".
- Bolt to the wall
- Bolt to the floor, permanent

- ▶ **34", 61" or 88" High x 48" long (not including feet) customizable sizes available**
- ▶ 1" x 2" 16 gauge stainless steel tubing with brushed finish or black powder coating available
- ▶ Corners fully welded, ground and polished
- ▶ ADA compliant screen wall doorway available
- ▶ Inset panels easily removable for design change/cleaning (no tools required)
- ▶ Laminated masonite insert panels- customizable panels match or complement any décor.
- ▶ Available applications: portable, designed with mounting plates or can be bolted to wall (by others)
- ▶ Provided with 8" long x 12" wide base plates for mobility
(Please note: base plates not available on walls taller than 34")



Screen Walls



Model	Dimensions L x W x H
MSW 34	48" x W x 34"
MSW 61	48" x W x 61"
MSW 88	48" x W x 88"

Specifications:

Provide Multiteria Screen Wall model #MSW_____ to be constructed of 1" x 2" 16 gauge stainless steel tubing with brushed finish or black powder coat finish with corners fully welded, ground and polished, _____" high and shipped in sections in length and height as shown on drawing.

Inset décor panels: Panels to be easily removable for cleaning or future replacement should the operator choose to change the decor.

Laminated masonite insert panels in laminate pattern as shown on drawing or 3Form insert panels in pattern as shown on drawing, colors to be determined, to be inset into sections of framing as shown on drawing.

Mounting Options: Mounting foot plates to be bolted to building floor on site by others (*standard*)

Method of bolting to be determined by others based on site conditions.

Provided with 8" long x 12" wide base plates for ease of movability.
(Please note: base plates not available on walls taller than 34")



Due to continuing product improvement, units and specifications are subject to change without notice.