

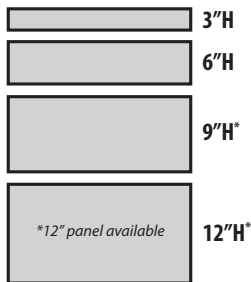
DESIGNING YOUR PERFECT LAKESIDE® CART IS EASY!

No matter what type of cart you need, make it uniquely your own by configuring the size and number of drawers, lock types, color and construction materials.

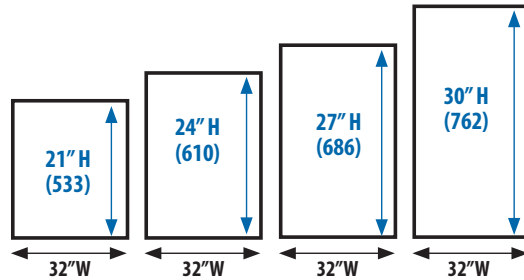
1. Determine the total number of 3", 6", 9" or 12" drawers you need

2. Select the appropriate cart size to accommodate your drawers

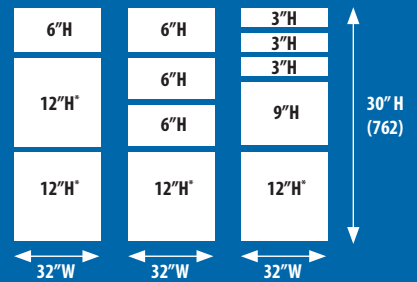
CLASSIC CART DRAWER HEIGHTS



CUMULATIVE TOTAL DRAWER SPACE AVAILABLE (when added together, your drawer or panel heights must equal one of the sizes below)



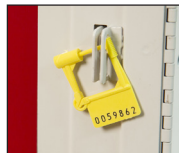
Example: Below are some possible drawer configurations of a 30" H cart.



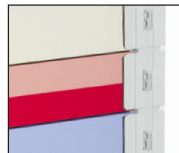
3. Choose a lock type



K Key Lock Full cart



B Breakaway Lock Bar Full cart or individual



IB Individual Breakaway Lock Bars



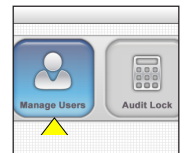
P Push-Button Lock with Key Override



X Proximity Reader with Electronic Auto-lock and Key Override



E Electronic Auto-lock with Key Override



LPR-SW Optional audit software for use with:

- E Electronic locks
- X Proximity Reader

4. Select a color

23 STANDARD COLORS (SOLID OR TWO-TONE) Antimicrobial powder coating; standard shell color is Telegraph Gray

- G Telegraph Gray
- RG Reed Green*
- AR Autumn Red*
- MG Moss Gray*
- BE Beige
- SB Slate Blue

- R Red
- B Dark Blue
- Y Yellow
- CR Cranberry
- PK Pink*
- TW Traffic White*

- BG Blue Gray
- HG Hunter Green
- T Teal
- L Lavender
- M Mauve
- SF Sea Foam Green

- CB Crash Cart Blue
 - TP Taupe
 - SG Sage*
 - LG Lime Green*
 - O Orange*
- * New color



20% LIGHTER
Than Traditional
All-Steel Carts

LAKESIDE®
PREFERRED SERIES CARTS
ARE PROUDLY MADE IN USA

