

# **L LAKESIDE**<sup>®</sup>

**MOBILE TRANSPORT & STORAGE  
SOLUTIONS FOR HEALTHCARE™**

800.558.8565 | [elakeside.com/medical](http://elakeside.com/medical)

Thank You,  
Healthcare  
Heroes!



## Product Line Overview:



MADE IN USA

- Utility Carts
- Operating Room
- Medical / Surgical
- Medical Supply, Treatment & Procedure Carts
- Central Supply Distribution, Storage & Janitorial
- Meal Delivery



Industry-Leading Lead Times  
from our US Factories

**S**andard  
**M**odifiable  
**C**ustom

Unlimited Product  
Selection, Ask For Details

## UTILITY CARTS

# 10,000+ Standard Configurations!

Lakeside is the **World's Leading Manufacturer of Utility Carts** offering more styles, configurations, and weight capacities than anyone else. Choice of:

- Weight Capacity
- Material: Stainless Steel or Plastic
- # Of Shelves
- Shelf Size
- Caster Style
- Bumper Style
- Include Ledges



# 311



# 721



# 473



# 2507



# 2000



# 2510



# 2523



# 2509



# 332



# 526



# 316

# O.R. / MEDICAL SURGICAL PRODUCTS

## EQUIPMENT STANDS



# 358



# 356 (300 lb capacity)  
# 466 (500 lb capacity)



# 474



#359 (300 lb capacity)  
#469 (500 lb capacity)

## SURGICAL INSTRUMENT TABLES



Instrument Table with Shelf



H-Brace Instrument Table



Nesting Instrument Tables

## SURGICAL CASE CARTS



Optional Clean/Biohazard  
I.D. Flag System

*Highly  
Configurable*

*Completely  
Customizable*



# CC242 with Clear Doors



# CC242 with Stainless Steel Doors



# CC142 with Clear Door



# CC142 with Stainless Steel Door

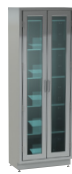


Base Model #7940  
(shown with optional bins)

## STORAGE SOLUTIONS - CABINETRY (STATIONARY OR MOBILE)



# 43620



# 3018



# ST-2624G



# ST-3679G



# ST-4724G

## NARCOTIC STORAGE



# LNC-1



# LNC-5



# LNC-5S



# LNC-2



# LNC-4



# LNC-6D



# LNC-11D

### Choice Of:

- Size (Compact, Small, Medium, Large, XL)
- # Of Doors (Single, Double)
- Shelf Style (Fixed, Adjustable)
- # Of Shelves (1, 2, 3, 4)
- # Of Locks (Single, Double)
- Lock(S) Style (Electronic with Key Override, Key: Single Or Double)

# MEDICAL SUPPLY CARTS



50% Lighter Than Steel

Choice of cart height, drawer combination, lock style & color!

## EMERGENCY CARTS



# C-630-B-1R Steel  
# C-630A-B-1R Aluminum



#P-630-B-2R Steel  
#P-630A-B-2R Aluminum  
shown with accessories



# C-324-P2B-1R Steel  
# C-324A-P2B-1R Aluminum



# C-324-P2B-2R Steel  
# C-324A-P2B-2R Aluminum



# C-524-B-1R Steel  
# C-524A-B-1R Aluminum



#C-630-B-2R Steel  
# C-630A-B-2R Aluminum



# C-630-2B-1RSPL Steel  
# C-630A-2B-1RSPL Aluminum

Includes 2 breakaway lock bars



# C-324-P2B-2R Steel  
# C-324A-P2B-2R Aluminum



# ST-630-B-2R Steel  
# ST-630A-B-2R Aluminum  
Compact Cart



#C-630-B-2R Steel  
# C-630A-B-2R Aluminum  
shown with accessories



#C-630-B-2R Steel  
# C-630A-B-2R Aluminum  
shown with accessories



#PER600

## ANESTHESIA CARTS



# C-530-K-2B Steel  
# C-530A-K-2B Aluminum



# C-630-P-2B Steel  
# C-630A-P-2B Aluminum



# C-324-P2K-2B Steel  
# C-324A-P2K-2B Aluminum

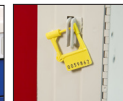


# C-627-K-2B Steel  
# C-627A-K-2B Aluminum

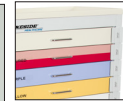
### 6 LOCKING OPTIONS



**K** Key Lock  
Full cart



**B** Breakaway Lock Bar  
Full cart or individual drawers



**IB** Individual Breakaway Lock Bars



**P** Push-Button with Key Override



# C-524-K-2B Steel  
# C-524A-K-2B Aluminum



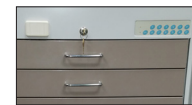
# C-427-E-2B Steel  
# C-427A-E-2B Aluminum



# C-630-E-2B Steel  
# C-630A-E-2B Aluminum



# P-627A-K-2B Steel  
# P-627A-K-2B Aluminum



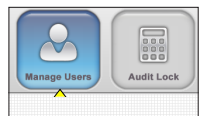
**X** Proximity Reader with Electronic Auto-lock and Key Override



**E** Electronic Auto-lock with Key Override

**LPR-SW** Optional audit software for use with:

- E Electronic locks
- X Proximity Reader



## ISOLATION CARTS



# C-330-K-1Y Steel  
# C-330A-K-1Y Aluminum



# ST-630-P-2BEY Steel  
# ST-630-P-2BEY Aluminum  
Compact Cart



# C-330-K-2Y Steel  
# C-330-K-2Y Aluminum



# C-530-P2K-1Y Steel  
# C-530A-P2K-1Y Aluminum



# C-430-K-1Y Steel  
# C-430A-K-1Y Aluminum



# MEDICAL SUPPLY CARTS



50% Lighter Than Steel

## NURSING/PHYSICIAN



# C-427-E-2RG Steel  
# C-427A-E-2RG Aluminum



# C-424-K-1CR Steel  
# C-424A-K-1CR Aluminum



# SM-524-K-2SB Steel  
# SM-524A-K-2SB Aluminum



# ST-630-E-2B Steel  
# ST-630A-E-2B



# ST-630-P-2BELV Steel  
# ST-630A-P-2BELV Aluminum



# ST-627-E-2BETP Steel  
# ST-627A-E-2BETP Aluminum

## WIDE



# SW-630-P-2MV Aluminum

## MEDICATION



# C-330-MUS-TW Steel  
# C-330A-MUS-TW Aluminum



## SUTURE STORAGE



# SS-627-2B Steel  
# SS-627A-2B Aluminum

## HYPERTHERMIA



# SH-130-2B Steel

## GENERAL PURPOSE

## 23 STANDARD COLORS (SOLID OR TWO-TONE)



# C-630-E-1G Steel  
# C-630A-E-1G Aluminum



# C-524-K-1G Steel  
# C-524A-K-1G Aluminum



# C-430-K-1TL Steel  
# C-430A-K-1TL Aluminum



# Custom Steel  
# Custom Aluminum

- G** Telegraph Gray
  - BG** Blue Gray
  - RG** Reed Green\*
  - HG** Hunter Green
  - AR** Autumn Red\*
  - T** Teal
  - MG** Moss Gray\*
  - L** Lavender
  - BE** Beige
  - M** Mauve
  - SB** Slate Blue
  - SF** Sea Foam Green
  - R** Red
  - CB** Crash Cart Blue
  - B** Dark Blue
  - TP** Taupe
  - Y** Yellow
  - SG** Sage\*
  - CR** Cranberry
  - LG** Lime Green\*
  - PK** Pink\*
  - O** Orange\*
  - TW** Traffic White\*
- \*New color



# C-424-K-1LV Steel  
# C-424A-K-1LV Aluminum



# ST-530-K-1SPL Steel  
# ST-530A-K-1SPL Aluminum



# P-627-K-2TL Steel  
# P-627A-K-2TL Aluminum



# C-330-MUS-TW Steel  
# C-330A-MUS-TW Aluminum  
Shown with optional accessories

## PEDIATRIC CRASH



# SP-930-IB-PED Steel  
# SP-930A-IB-PED Aluminum

## SUPER SAVER BEDSIDE



#BV05 Steel



#BV01 Steel



#BV03 Steel



#BV06 Steel

# CENTRAL SUPPLY DISTRIBUTION, STORAGE & JANITORIAL



Square-Post Wire Shelving



# R184863CC-4



# RCC247272



# 7920



# R184863SSC



# R2436CUC-3



# R244863CPBC-B



# R1860SWR



# R246060CPC



# 53580



# 8165



# 8162

## MEAL DELIVERY CARTS



Stealth™ Tray Delivery Carts  
ST2D1T16



Elite Series™ Late Tray Delivery Cart  
# 5500

For healthcare meal delivery systems, visit [alluserv.com](http://alluserv.com)



MOBILE TRANSPORT & STORAGE  
SOLUTIONS FOR HEALTHCARE™

800.558.8565 | [elakeside.com/medical](http://elakeside.com/medical)



Industry-Leading Lead Times  
from our US Factories

**Standard**  
**Modifiable**  
**Custom**  
Unlimited Product  
Selection, Ask For Details