



# INNOVATION GUIDE

*Your Guide to Unlimited Possibilities*



## KEY BENEFITS

- Design Support (Approx. 3 Days)
- Rapid Quote Back To You
- Superior Lead Times
- Made In The USA

(800) 558-8565   
[elakeside.com/foodservice](http://elakeside.com/foodservice) 



## Condiment Cart

A school district required customized condiment counters for young children. We modified a Lakeside condiment counter, reducing its height to 28" and placing the pumps at 36" for easy access. The final station included under-counter storage, space for trays, and a laminate color matching the school's décor.



ORIGINAL #70510

### Modifications:

- Tray slides
- Counter height lowered
- Custom laminate



MODIFIED #SP-5919



MODIFIED #SP-4332

## Refreshment Cart

A hospital system sought to replicate a refreshment cart they had previously purchased from another manufacturer. Their main focus was recreating the wrapped front and sides, as the cart was used for transporting beverages and snacks across multiple hospital floors. We redesigned the structural frame to accommodate heavy-duty loads for restocking and to provide visibility and protection for the upper tiers.

### Modifications:

- Overshelf
- Protective guard
- HPE panels



ORIGINAL #958

## Mat Dispenser

An amusement park approached us with a dispensing challenge. They needed a portable solution for mats to be loaded at the base of an attraction and wheeled to a dispensing area. Mats needed to be dispensed within a small opening off the ground. It also needed to be durable enough to support stacks of one-pound mats. Through our collaboration, we developed a seamless system that revolutionized the guest experience.



ORIGINAL #820

### Modifications:

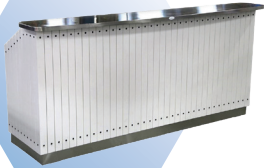
- Dispensing opening
- Compact
- Increased durability



MODIFIED #SP-4416

## Outdoor Portable Bar

We provided a Washington, DC hotel with an elegant and modern outdoor bar solution for their upscale restaurant. By reimagining the wood slat concept from our Chalet Bar using HDPE material, we achieved both durability and an upscale visual appeal. Our design seamlessly blended elegance, durability, and functionality.



ORIGINAL #76511

**Modifications:**

- HDPE slats



MODIFIED #SP-4795



MODIFIED #SP-6306

## Coffee Kiosk

A high school marketing class collaborated with their school nutrition department to enhance the cafeteria with a coffee bar. The coffee bar's goal was to become a sustainable income source for student activities. They approached us for a customized design for high-frequency mobile use. With a teenage demographic in mind, the modified design took the standard Lakeside 6120 and removed several dispensers, added an overstructure, and a custom sign.

**Modifications:**

- Removed cup and whipped cream dispensers
- Custom sign
- Added overstructure



ORIGINAL #6120

## Soup Pot Cart

Meals on Wheels had quality issues with carts they purchased from another manufacturer. They approached us for a customized cart that could handle heavy loads, daily use, and long distances while serving large volumes of food. The cart also needed to meet NSF compliance standards. Lakeside improved maneuverability with added handles, insulated the silos to keep soup hot, and made cleaning easy by adding drains to the silos.



ORIGINAL #543

**Modifications:**

- Added handles
- Insulated silos
- Drainage feature



MODIFIED #SP-7594

## Merchandising Cart

A client needed a versatile cart for their outdoor food and beverage operation. By modifying a standard Lakeside cart, our design and production teams added a removable shelf for easy basket addition, incorporated a drop leaf with a cord port for a POS station, and included a removable hanging basket system for additional storage options. The sturdy welded stainless steel construction ensured durability and cleanability.



MODIFIED #SP-6048



ORIGINAL #68322

### Modifications:

- Backsplash
- Tubular handles
- Removable hanging basket system
- Drop leaf with setup

## Waste & Recycle Bin

A custom unit was created by combining features of models 3418 and 3420 to accommodate an array of waste and recycling needs in an elementary school. This solution, was strategically designed to be lower for easy reach by younger students. The unit also featured customized labels with student-friendly wording. Additionally, the openings were enlarged to enhance usability and efficiency. The success of this design led to its replication and use in another elementary school.



MODIFIED #SP-8942



ORIGINAL #3420

### Modifications:

- Laminate exterior
- Magnetic closures
- Liquid waste dump sink

## Cash Station

A museum was reconfiguring their entry space to increase traffic flow and gain flexibility for check-in during special events. They removed their bulky service counter and wanted to replace it with smaller cashier stands. Their team came to our offices to view samples and discuss the size and function they needed, and the aesthetic they wanted. With a quick turnaround by engineering and production, the final cashier stands were at the museum in only four weeks from order to delivery.



MODIFIED #SP-7520



ORIGINAL #64120

### Modifications:

- Custom auxiliary holes
- Foam-filled pneumatic casters
- Laminate top
- Designed for seated use